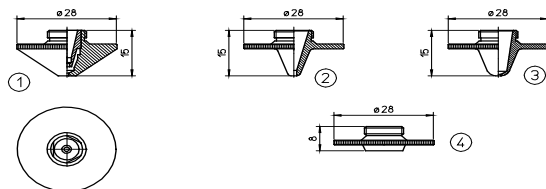
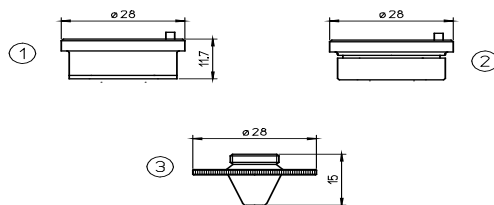


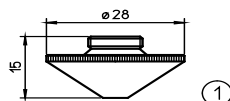
## GHT<sup>®</sup> - SHT<sup>®</sup>



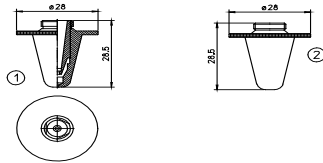
| POS          | obj.číslo    | originál kód                                     | popis  |
|--------------|--------------|--|--|
| 1            | PT358-0669   |  | PRECITEC <sup>®</sup> dvojitá tryska Ø 0.8       |
|              | PT358-0010   |  | PRECITEC <sup>®</sup> dvojitá tryska Ø 1.0       |
|              | PT358-0125   |  | PRECITEC <sup>®</sup> dvojitá tryska Ø 1.2       |
|              | PT358-0015   |  | PRECITEC <sup>®</sup> dvojitá tryska Ø 1.5       |
|              | PT358-0018   |  | PRECITEC <sup>®</sup> dvojitá tryska Ø 1.8       |
|              | PT358-0020   |  | PRECITEC <sup>®</sup> dvojitá tryska Ø 2.0       |
|              | PT358-0023   |  | PRECITEC <sup>®</sup> dvojitá tryska Ø 2.3       |
|              | PT358-0007   |  | PRECITEC <sup>®</sup> dvojitá tryska Ø 2.5       |
|              | PT358-0030   |  | PRECITEC <sup>®</sup> dvojitá tryska Ø 3.0       |
|              | PT358-0035   |  | PRECITEC <sup>®</sup> dvojitá tryska Ø 3.5       |
|              | PT358-0008CP |  | PRECITEC <sup>®</sup> dvojitá tryska Ø 0.8 chrom |
|              | PT358-0010CP |  | PRECITEC <sup>®</sup> dvojitá tryska Ø 1.0 chrom |
|              | PT358-0125CP |  | PRECITEC <sup>®</sup> dvojitá tryska Ø 1.2 chrom |
|              | PT358-0015CP |  | PRECITEC <sup>®</sup> dvojitá tryska Ø 1.5 chrom |
|              | PT358-0018CP |  | PRECITEC <sup>®</sup> dvojitá tryska Ø 1.8 chrom |
|              | PT358-0020CP |  | PRECITEC <sup>®</sup> dvojitá tryska Ø 2.0 chrom |
|              | PT358-0023CP |  | PRECITEC <sup>®</sup> dvojitá tryska Ø 2.3 chrom |
|              | PT358-0025CP |  | PRECITEC <sup>®</sup> dvojitá tryska Ø 2.5 chrom |
|              | PT358-0030CP |  | PRECITEC <sup>®</sup> dvojitá tryska Ø 3.0 chrom |
| PT358-0035CP |              | PRECITEC <sup>®</sup> dvojitá tryska Ø 3.5 chrom |  |
| 2            | PT406-0001   |  | PRECITEC <sup>®</sup> tryska Ø 1.0 HD            |
|              | PT406-0002   |  | PRECITEC <sup>®</sup> tryska Ø 1.2 HD            |
|              | PT406-0003   |  | PRECITEC <sup>®</sup> tryska Ø 1.5 HD            |
| 3            | PT406-0008   |  | PRECITEC <sup>®</sup> tryska Ø 0.8               |
|              | PT406-0010   |  | PRECITEC <sup>®</sup> tryska Ø 1.0               |
|              | PT406-0125   |  | PRECITEC <sup>®</sup> tryska Ø 1.2               |
|              | PT406-0015   |  | PRECITEC <sup>®</sup> tryska Ø 1.5               |
|              | PT406-0018   |  | PRECITEC <sup>®</sup> tryska Ø 1.8               |
|              | PT406-0020   |  | PRECITEC <sup>®</sup> tryska Ø 2.0               |
| 4            | PT406-0043   |  | PRECITEC <sup>®</sup> adaptér pro trysku TRUMPF  |



| POS          | obj.číslo     | originál kód                 | popis                                      |
|--------------|---------------|------------------------------|--|
| 1            | PT348-1330OEM | 281330-P0571-260-00001       | PRECITEC® ORIGINAL DRŽÁK TRYSKY KT B2"     |
|              | PT348-1051    | P0571-1051-00001             | PRECITEC® ORIGINAL DRŽÁK TRYSKY KT B2" CON |
|              | PT348-1330    | 281330 - P0571-260-00001     | PRECITEC® DRŽÁK TRYSKY KT B2"              |
| 2            | PT348-1330C   | 281330 - P0571-260-00001     | PRECITEC® DRŽÁK TRYSKY KT B2" CON          |
| 3            | PT350-1590    | 281590-P0591-569-00008       | PRECITEC® tryska Ø 0.8                     |
|              | PT350-1331    | 281331-P0591-561-00010       | PRECITEC® tryska Ø 1.0                     |
|              | PT350-1351    | 281351-P0591-562-00012       | PRECITEC® tryska Ø 1.2                     |
|              | PT350-1352    | 281352-P0591-563-00015       | PRECITEC® tryska Ø 1.5                     |
|              | PT350-0017    |                              | PRECITEC® tryska Ø 1.7                     |
|              | PT350-1353    | 281353-P0591-564-00018       | PRECITEC® tryska Ø 1.8                     |
|              | PT350-1354    | 281354-P591-565-00020        | PRECITEC® tryska Ø 2.0                     |
|              | PT350-0023    |                              | PRECITEC® tryska Ø 2.3                     |
|              | PT350-1591    | 281591-P0591-566-00025       | PRECITEC® tryska Ø 2.5                     |
|              | PT350-0030    |                              | PRECITEC® tryska Ø 3.0                     |
|              | PT350-1590CP  | 281590-P0591-569-00008       | PRECITEC® tryska Ø 0.8 chrom               |
|              | PT350-1331CP  | 281331-P0591-561-00010       | PRECITEC® tryska Ø 1.0 chrom               |
|              | PT350-1351CP  | 281351-P0591-562-00012       | PRECITEC® tryska Ø 1.2 chrom               |
|              | PT350-1352CP  | 281352-P0591-563-00015       | PRECITEC® tryska Ø 1.5 chrom               |
|              | PT350-0001CP  |                              | PRECITEC® tryska Ø 1.7 chrom               |
|              | PT350-1353CP  | 281353-P0591-564-00018       | PRECITEC® tryska Ø 1.8 chrom               |
|              | PT350-1354CP  | 281354-P591-565-00020        | PRECITEC® tryska Ø 2.0 chrom               |
|              | PT350-0002CP  |                              | PRECITEC® tryska Ø 2.3 chrom               |
|              | PT350-1591CP  | 281591-P0591-566-00025       | PRECITEC® tryska Ø 2.5 chrom               |
| PT350-0003CP |               | PRECITEC® tryska Ø 3.0 chrom |  |



| POS | obj.číslo    | originál kód           | popis                            |
|-----|--------------|------------------------|----------------------------------|
|     | PT345-0008   |                        | PRECITEC® tryska Ø 0.8 HD        |
|     | PT345-1548   | 281548-P0591-571-00010 | PRECITEC® tryska Ø 1.0 HD        |
|     | PT345-1549   | 281549-P0591-572-00012 | PRECITEC® tryska Ø 1.2 HD        |
|     | PT345-1463   | 281463-P0591-573-00015 | PRECITEC® tryska Ø 1.5 HD        |
|     | PT345-0001   | P0591-574-00018        | PRECITEC® tryska Ø 1.8 HD        |
|     | PT345-1550   | 281550-P0591-575-00020 | PRECITEC® tryska Ø 2.0 HD        |
|     | PT345-0003   |                        | PRECITEC® tryska Ø 2.3 HD        |
|     | PT345-1551   | 281551-P0591-576-00025 | PRECITEC® tryska Ø 2.5 HD        |
|     | PT345-1552   |                        | PRECITEC® tryska Ø 2.75 HD       |
|     | PT345-0002   |                        | PRECITEC® tryska Ø 3.0 HD        |
|     | PT345-0005   |                        | PRECITEC® tryska Ø 3.2 HD        |
|     | PT345-0006   |                        | PRECITEC® tryska Ø 3.5 HD        |
|     | PT345-0004   |                        | PRECITEC® tryska Ø 4.0 HD        |
|     | PT345-0007   |                        | PRECITEC® tryska Ø 4.5 HD        |
|     | PT345-1547CP |                        | PRECITEC® tryska Ø 0.8 HD chrom  |
|     | PT345-1548CP | 281548-P0591-571-00010 | PRECITEC® tryska Ø 1.0 HD chrom  |
|     | PT345-1549CP | 281549-P0591-572-00012 | PRECITEC® tryska Ø 1.2 HD chrom  |
|     | PT345-1463CP | 281463-P0591-573-00015 | PRECITEC® tryska Ø 1.5 HD chrom  |
|     | PT345-0001CP |                        | PRECITEC® tryska Ø 1.8 HD chrom  |
|     | PT345-1550CP | 281550-P0591-575-00020 | PRECITEC® tryska Ø 2.0 HD chrom  |
|     | PT345-0003CP |                        | PRECITEC® tryska Ø 2.3 HD chrom  |
|     | PT345-1551CP | 281551-P0591-576-00025 | PRECITEC® tryska Ø 2.5 HD chrom  |
|     | PT345-1552CP |                        | PRECITEC® tryska Ø 2.75 HD chrom |
|     | PT345-0002CP |                        | PRECITEC® tryska Ø 3.0 HD chrom  |
|     | PT345-0005CP |                        | PRECITEC® tryska Ø 3.2 HD chrom  |
|     | PT345-0006CP |                        | PRECITEC® tryska Ø 3.5 HD chrom  |
|     | PT345-0004CP |                        | PRECITEC® tryska Ø 4.0 HD chrom  |
|     | PT345-0007CP |                        | PRECITEC® tryska Ø 4.5 HD chrom  |



| POS | obj. číslo | orig. kód       | popis                                 |
|-----|------------|-----------------|---------------------------------------|
| 1   | PT420-0010 |                 | PRECITEC® dvojitá tryska Ø 1.0 dlouhá |
|     | PT420-0125 |                 | PRECITEC® dvojitá tryska Ø 1.2 dlouhá |
|     | PT420-0015 |                 | PRECITEC® dvojitá tryska Ø 1.5 dlouhá |
|     | PT420-0018 |                 | PRECITEC® dvojitá tryska Ø 1.8 dlouhá |
|     | PT420-0020 |                 | PRECITEC® dvojitá tryska Ø 2.0 dlouhá |
|     | PT420-0023 |                 | PRECITEC® dvojitá tryska Ø 2.3 dlouhá |
|     | PT420-0025 |                 | PRECITEC® dvojitá tryska Ø 2.5 dlouhá |
|     | PT420-0030 |                 | PRECITEC® dvojitá tryska Ø 3.0 dlouhá |
|     | PT420-0035 |                 | PRECITEC® dvojitá tryska Ø 3.5 dlouhá |
| 2   | PT390-0010 | P0573-563-00010 | PRECITEC® tryska Ø 1.0 dlouhá         |
|     | PT390-0012 | P0573-563-00012 | PRECITEC® tryska Ø 1.2 dlouhá         |
|     | PT390-0015 | P0573-563-00015 | PRECITEC® tryska Ø 1.5 dlouhá         |
|     | PT390-0018 |                 | PRECITEC® tryska Ø 1.8 dlouhá         |
|     | PT390-0020 | P0573-564-00020 | PRECITEC® tryska Ø 2.0 dlouhá         |
|     | PT390-0023 | P0573-565-00023 | PRECITEC® tryska Ø 2.3 dlouhá         |
|     | PT390-0025 | P0573-566-00025 | PRECITEC® tryska Ø 2.5 dlouhá         |
|     | PT390-0030 |                 | PRECITEC® tryska Ø 3.0 dlouhá         |



